

The **RS485 Repeater** can be added anywhere in the network and will display the readings and status of all devices on the network.

Typically used in conjunction with the MAP panel to provide **local** information on alarms within a room, lab, gas shed etc. without having to enter.

Applications include: Waste Water Treatment Facilities, Manufacturing, Pharma, Bio-Pharma, Food and Beverage industries, Boilers, Laboratories, Car parks, Agriculture and Landfill sites.

System Features

- Mount anywhere within the network
- Visual indication of gas levels
- 1.7" Full Colour display
- Network up to 200 gas sensors
- U-processor based functionality
- RS-485 Communication
- Internal fault monitoring
- Set time remotely from the MAP Panel.
- Automatically detects other networked devices
- Powered from network
- Display 5 detectors at once

User Friendly

- Easy to use step by step menu
- Minimal training required
- Password protected
- Supplied pre-configured
- No user configuration required

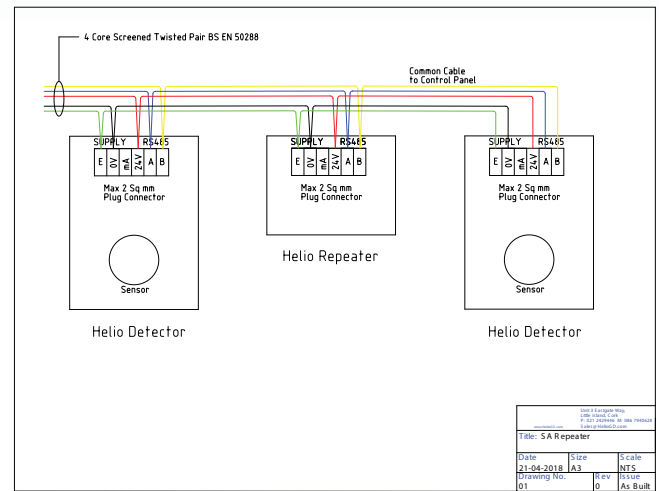
Cost Benefits

- RS-485 Network reduce cabling costs
- Simple installation
- Save on additional control panels in large systems

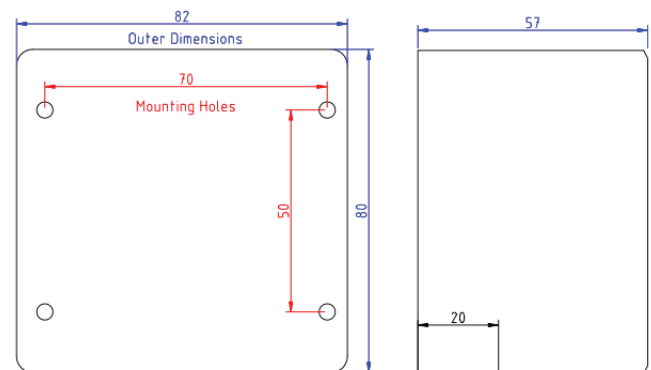


Environmental Specifications	
Operating temperature	-30 °C to 50 °C
Pressure range	80 to 120 kPA
Humidity range	15 to 90 % rh
Electrical Specifications	
Supply voltage	24Vdc
Power Consumption	Max 2W
Fuse	50mA Auto-Reset
Device Specifications	
Repeatable Devices	Standalone, SL, SLEX, DTEX, XTRX
Transient protection	PCB mounted Metal Oxide varistor
Terminations	PCB terminal blocks up to 2.5mm ² cables
Alarm inhibit	Password protected alarm inhibit / muting
Alarm level	Freely programmable
Alarm Hysteresis	Reset level freely programmable
Alarm types	Digital setting (fully adjustable between 10% and 90% of full scale)
Alarm types	Energised / de-energised Enrichment /deficiency
Alarm Delay	Programmable delay on alarm activation.
Resolution	0.01,0.1 & 1
Number of Devices	250, 5 on screen
Full scale range	Freely programmable
Memory	64KB EEPROM
EN Regulation Compliance	EN50270, EN50271

Wiring



Dimensions (mm)



Electromagnetic conformance (EMC) complies with 2014/30/EU

For more information:

T. +353 21 2429 448
E. sales@heliogd.com

www.HelioGD.com
Unit 3, Eastgate Way, Little Island, Cork, Ireland.

 [linkedin.com/company/helio-gas-detection](https://www.linkedin.com/company/helio-gas-detection)

